



Cesco Hydraulic Transit Mixer

Dutymaster 6m³, 7m³, 8m³



6.0m³ with options
Trasmittal 575 gearbox
Poly guards

STANDARD MIXER	OPTIONS
<ul style="list-style-type: none"> ❖ Barrel manufactured from 5mm high tensile steel ❖ 8mm high tensile steel dished end with inner wear plate ❖ Pressed blade system ❖ Frame including feed chute, swivel chute ❖ Chute rack on mixer chassis ❖ Gearbox ZF3301 (6.5m): ZF4300 (7m & over) ❖ 55/75 90 Series motor and pump ❖ Steel guards ❖ 2 x poly extension chutes, 1 x poly placement chute ❖ Cable controls ❖ Manual chute jack ❖ Steel trunnion rollers ❖ Stainless steel bolts/nuts/washers ❖ 200L pressurised water system ❖ Painted in polyurethane paint – one colour barrel one colour frame ❖ Truck mounted to your suitable vehicle fitted with FWTO 	<ul style="list-style-type: none"> ❖ Poly guards (wt saving 40kg) ❖ Pendant, Hydraulic or Remote controls ❖ Double acting or remote chute jack ❖ 150L, 180L, 300L pressurised water system ❖ 2 colour barrel ❖ Water meter ❖ Slump meter ❖ Removable inlet bridge ❖ Aluminium slide up ladder

Cesco Australia Limited				
Brisbane:	Head Office:	39 Aquarium Avenue Hemmant Q 4179	Ph: (07) 3390 7722	Fax: (07) 3390 6898
Brisbane:	Mixer Service Centre	25 Ingleston Road Wakerley Q 4154	Ph: (07) 3390 7089	Fax: (07) 3390 6940
Gold Coast:	Mixer Service Centre	2/6 31 Rudman Parade Andrews Q 4220	Ph: (07) 5593 7066	Fax: (07) 5593 7477
Melbourne:	Mixer Service Centre:	76-78 Hallam South Road Hallam Vic 3903	Ph: (03) 9796 4977	Fax: (03) 97964811
Authorised Distributors				
Sydney:	Davcron Pty Ltd	5 Tennyson Street Granville NSW 2142	Ph: (02) 9637 8186	Fax: (02) 9637 5184
Perth:	Precedence Eng.	10 Drummond Place West Perth WA 6005	Ph: (08) 9328 4818	Fax: (08) 9328 9786
Authorised Agent				
Adelaide:	Marleston Eng.	40 Manchester Street Mile End SA 5031	Ph: (08) 8443 6766	Fax: (08) 8443 6832

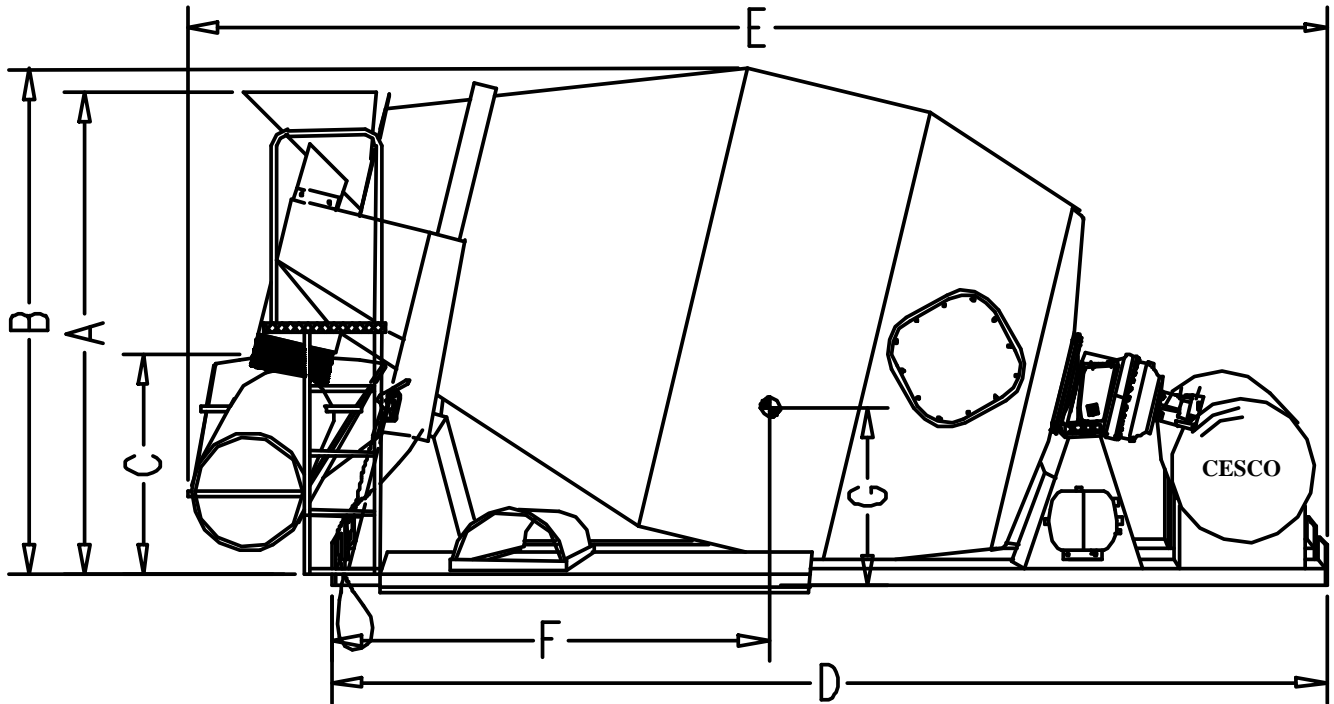
Visit our website: www.cescoaustralia.com

A member of the ZICOM GROUP



Specification

Dutymaster 6m³, 7m³, 8m³ Heavy Duty



Dimensions	6.0 m ³	7.0 m ³	8.0 m ³
Operating Weight (water not included)	3,040 kgs	3,325 kgs	3,525 kgs
Total Barrel Volume	9.5 m ³	11.3 m ³	13.1 m ³
Mixing Capacity to AS1379 - 1991	6.0 m ³	7.0 m ³	8.0 m ³
Approx Capacity at 75mm slump	6.0 m ³	7.0 m ³	8.0 m ³
Approx Capacity at 120mm slump	5.5 m ³	6.4 m ³	7.5 m ³
Height to Feed Chute (A)	2,360 mm	2,460 mm	2,560 mm
Height Overall (B)	2,490 mm	2,590 mm	2,690 mm
Height to Swivel Chute (C)	1,030 mm	1,130 mm	1,235 mm
Centre of Gravity – estimated (F)	2,150 mm	2,450 mm	2,750 mm
Height to Centre of Gravity (approx) (G)	840 mm	920 mm	970 mm
Nominal Length on Truck Chassis (D)	4,400 mm	4,900 mm	5,350 mm
Nominal Length Overall (E)	4,900 mm	5,400 mm	5,850 mm
Barrel Specification:		Width	
Dished End	8mm High Tensile	Width over Mudguards	2,460 mm
Back Cone	5mm High Tensile	Outside Chassis Width	860 mm
Nose Cone	5mm High Tensile	Standard Chassis Rails	100 x 100 x 5 RHS
Mix Blades	5mm High Tensile		
Discharge Blades	3mm High Tensile		

Advances in design or improvements in materials are incorporated without delay, consequently we reserve the right to alter details given on this specification sheet without notice. Operating weight and centre of gravity may vary depending on selected options.

Visit our website: www.cescoaustralia.com

A member of the ZICOM GROUP