



Cesco Hydraulic Transit Mixer

Loadmaster 6.5m³



6.5m³ Standard Spec

STANDARD MIXER	OPTIONS
<ul style="list-style-type: none"> ❖ Barrel manufactured from 4mm Rheemalloy (wear resistant) steel ❖ 8mm high tensile dished end with inner wear plate ❖ Pressed blade system ❖ Frame including feed chute & swivel chute ❖ Chute rack on mixer chassis ❖ Gearbox ZF3301 ❖ 75/55 pump and motor ❖ Steel guards ❖ 2 x poly extension chutes, 1 x poly placement chute ❖ Cable controls ❖ Manual chute jack ❖ Steel trunnion rollers ❖ Stainless steel bolts/nuts/washers ❖ 200L pressurised water system ❖ Painted in polyurethane paint – one colour barrel one colour frame ❖ Truck mounted to your suitable vehicle fitted with FWTO 	<ul style="list-style-type: none"> ❖ 6mm dished end (wt saving 110kgs) ❖ Poly guards (wt saving 40kgs) ❖ Pendant, Hydraulic or Remote controls ❖ Nylon trunnion rollers (wt saving 30kgs) ❖ Double acting or remote chute jack ❖ 150L, 180L or 300L pressurised water system ❖ 2 colour barrel ❖ Water meter ❖ Slump meter ❖ Removable inlet bridge ❖ Aluminium slide up ladder

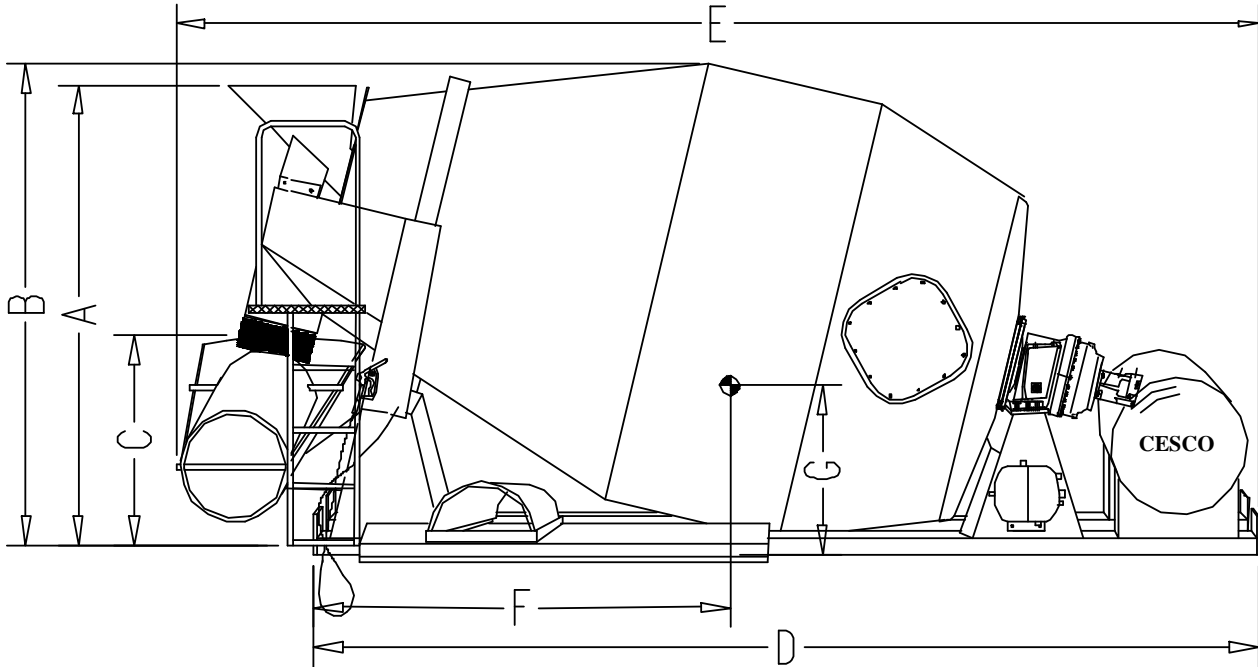
Cesco Australia Limited

Brisbane:	Head Office:	39 Aquarium Avenue Hemmant Q 4179	Ph: (07) 3390 7722	Fax: (07) 3390 6898
Brisbane:	Mixer Service Centre	25 Ingleston Road Wakerley Q 4154	Ph: (07) 3390 7089	Fax: (07) 3390 6940
Gold Coast:	Mixer Service Centre	2/6 31 Rudman Parade Andrews Q 4220	Ph: (07) 5593 7066	Fax: (07) 5593 7477
Melbourne:	Mixer Service Centre:	76-78 Hallam South Road Hallam Vic 3903	Ph: (03) 9796 4977	Fax: (03) 97964811

Authorised Distributors

Sydney:	Davcron Pty Ltd	5 Tennyson Street Granville NSW 2142	Ph: (02) 9637 8186	Fax: (02) 9637 5184
Perth:	Precedence Eng.	10 Drummond Place West Perth WA 6005	Ph: (08) 9328 4818	Fax: (08) 9328 9786
Authorised Agent				
Adelaide:	Marleston Eng.	40 Manchester Street Mile End SA 5031	Ph: (08) 8443 6766	Fax: (08) 8443 6832

Visit our website: www.cescoaustralia.com



Dimensions		6.5 m³	
Operating Weight (water not included)		2,965 kgs	
Total Barrel Volume		10.1 m ³	
Mixing Capacity to AS1379 - 1991		6.5 m ³	
Approx Capacity at 75mm slump		6.5 m ³	
Approx Capacity at 120mm slump		6.0 m ³	
Height to Feed Chute	(A)	2,410 mm	
Height Overall	(B)	2,540 mm	
Height to Swivel Chute	(C)	1,080 mm	
Centre of Gravity – estimated	(F)	2,300 mm	
Height to Centre of Gravity (approx)	(G)	865 mm	
Nominal Length on Truck Chassis	(D)	4,600 mm	
Nominal Length Overall	(E)	5,100 mm	
Barrel Specification:		Width	
Dished End	8mm High Tensile	Width over Mudguards	2,460 mm
Back Cone	4mm Rheemalloy	Outside Chassis Width	860 mm
Nose Cone	4mm Rheemalloy	Standard Chassis Rails	100 x 100 x 5 RHS
Mix Blades	4mm Rheemalloy		
Discharge Blades	3mm High Tensile		

Advances in design or improvements in materials are incorporated without delay, consequently we reserve the right to alter details given on this specification sheet without notice. Operating weight and centre of gravity may vary depending on selected options.